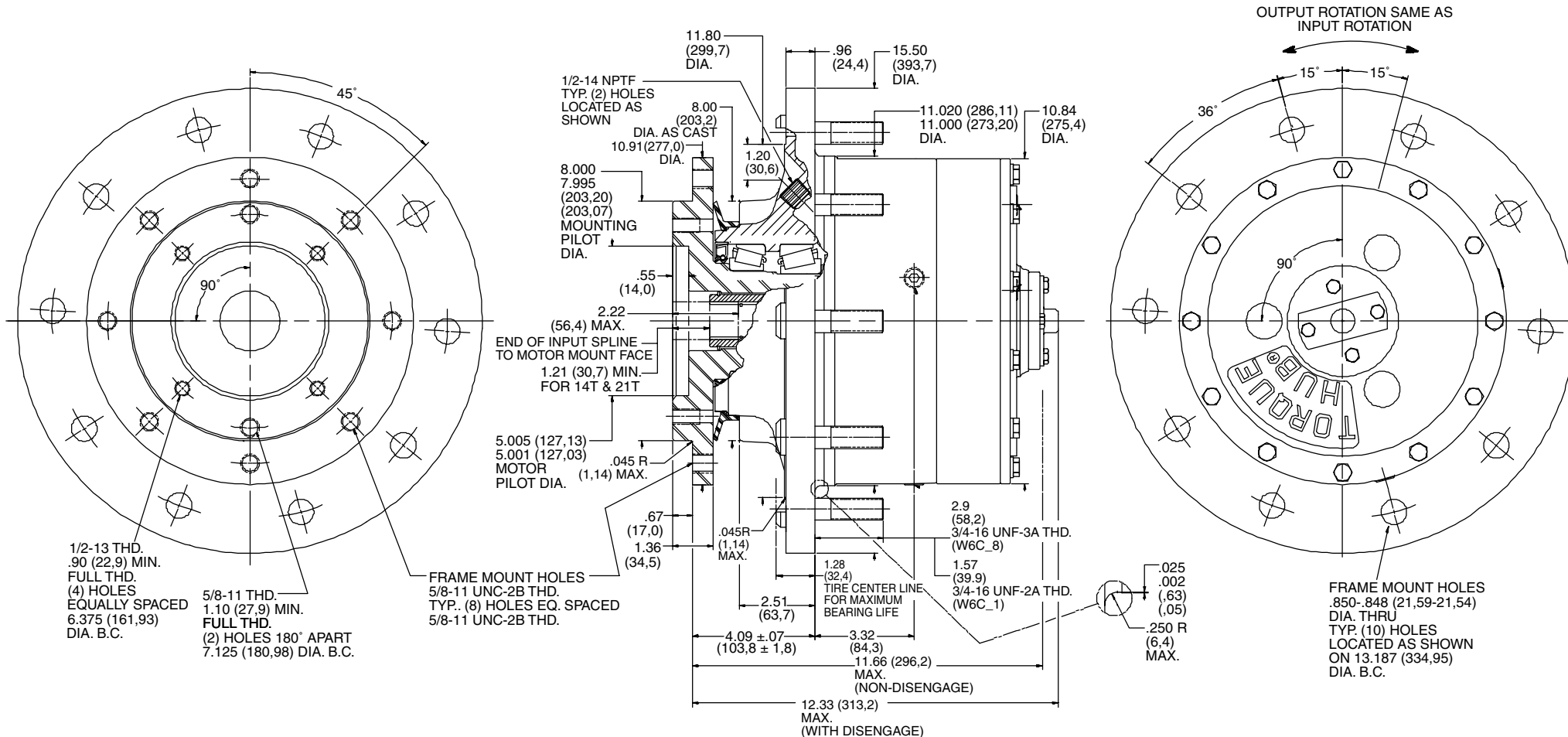


TORQUE-HUB®
Planetary Final Drives



FAIRFIELD
GEARED FOR EXCELLENCE

NOTE: MM SHOWN IN ()
MOTOR CAVITY DIMENSIONS VARY WITH MODEL

OTHER MODELS ALSO AVAILABLE
FAIRFIELD BRAKE AVAILABLE

W6C1

Performance Data

Continuous	Intermittent	Peak
60,000lb-in	120,000lb-in	150,000lb-in
5,000lb-ft	10,000lb-ft	12,500lb-ft
6,779Nm	13,558Nm	16,950Nm
691kg-m	1,383kg-m	1,725kg-m

For ultimate torque and horsepower capacities, contact a Torque-Hub® representative.

Speed Limitations

Input Speed: 5,000 RPM Maximum Intermittent

Weight

Approximately 265 lbs (119 kg)

Note: Specific models will change weights.

W6C1 Model Formula

Oil

Fill to half full with 90 weight gear lube with EP additive on most applications.

Approximate Volume 50 oz. (1,479 cm³)

Note: Oil level and type will vary with specific model and application.

Conditions of Bearing Curve

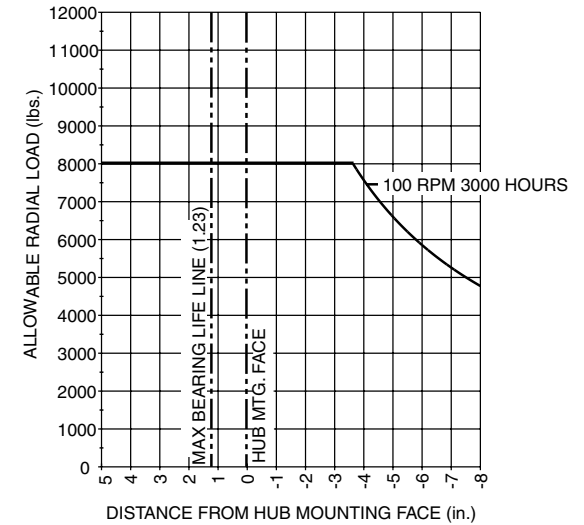
Life = 3,000 hours B-10

Speed = 100 RPM output

To adjust for loads and speeds other than shown on curve:

$$\text{Adjusted Life (hrs)} = 3,000 \left(\frac{100 \text{ RPM}}{\text{Speed (Adjusted)}} \right) \times \left(\frac{\text{Load (Curve)}}{\text{Load (Adjusted)}} \right)^{10/3}$$

Bearing Curve



W 6 C1 1 0 7 19 Z B H

W – Torque-Hub® Wheel Drive

6 – Series

	Spindle			Hub		
	Motor Mount	Flange Mounting Dia.	Motor B.C.	Frame B.C.	Mounting Dia.	Flange B.C.
C1	SAE "C"	$\frac{8.000}{7.995}$	(4) 1/2-13 6.375 B.C.	(8) 5/8-11 9.500 B.C.	$\frac{11.020}{11.000}$	(10) .850/.848 13.187 B.C.

Stud

- 0**– Not Included
- A**– 3/4 - 16 by 3.03 in. (use with .875/.873 flange hole on steel hub)
- 1**– 3/4 - 16 by 2.53 in. (use with .850/.848 flange hole on cast iron hub)
- 5**– 3/4 - 16 Am. Nat. thd. by 2.63 in. (use with .875/.873 flange hole on steel hub)
- 7**– 5/8 - 18 by 2.43 in. (use with .624/.622 flange hole on steel hub)
- 8**– 3/4 - 16 by 3.25 in. (use with .850/.848 flange hole on cast iron hub)
- 9**– 5/8 - 18 by 2.94 in. (use with .624/.622 flange hole w/c bore on steel hub)

Input

- C**– 14T, 12/24 with Solid Cover Cap (has spring)
- 3**– 13T, 16/32 Spline
- 4**– 14T, 12/24 Spline
- 7**– 21T, 16/32 Spline (not available in 26:1 and 32:1)
- 8**– 15T, 16/32 Spline

Options

- 0**– Blank
- Z**– Seal Boot

Special Features

- H**– Heavy Duty Carrier

Special Features

- B**– Special 3400743 Spindle w/Ret. Ring Retention of Hvy Duty Thrust Washers
- Z**– Blank

Special Features

- Q**– Quick Disconnect
- X**– Antidisengage Spacer in Coupling
- Z**– Blank

Reduction

- 13**– 13.07:1
- 15**– 15.30:1
- 19**– 19.04:1
- 26**– 25.96:1
- 32**– 32.31:1
- *55**– 55.08:1
- *93**– 93.46:1
- *116**– 116.32:1

*uses G07 "gearhead drive"

FAIRFIELD
GEARED FOR EXCELLENCE
Fairfield Manufacturing Company, Inc.
First in Custom Gears and Drive Systems

U.S. 52 South
P.O. Box 7940
Lafayette, IN 47903-7940 USA
Telephone (765) 772-4000
FAX (765) 772-4001
www.fairfieldmfg.com

Torque-Hub is a registered trademark of Fairfield.
© 2000 Fairfield Manufacturing Company, Inc.