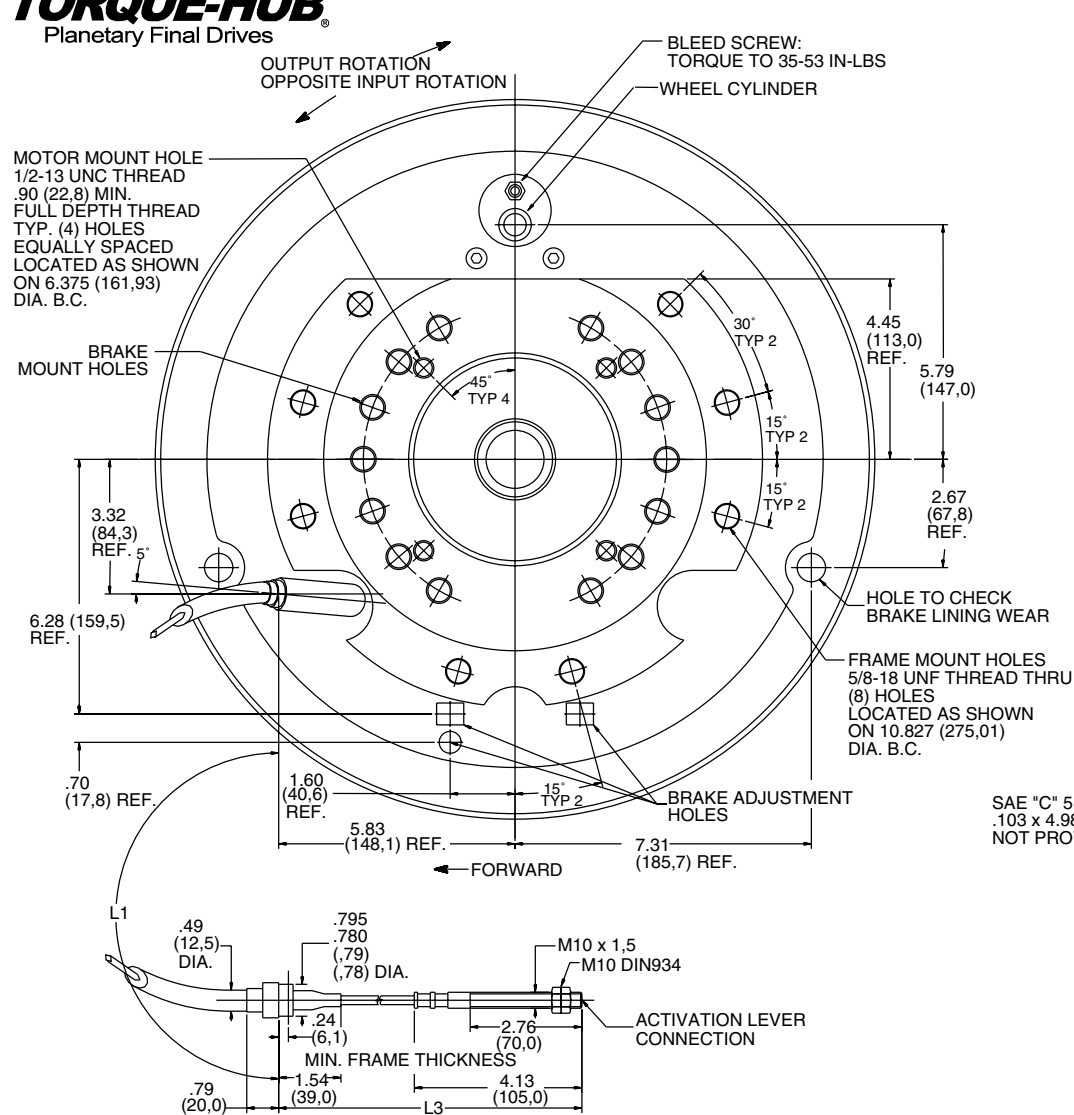
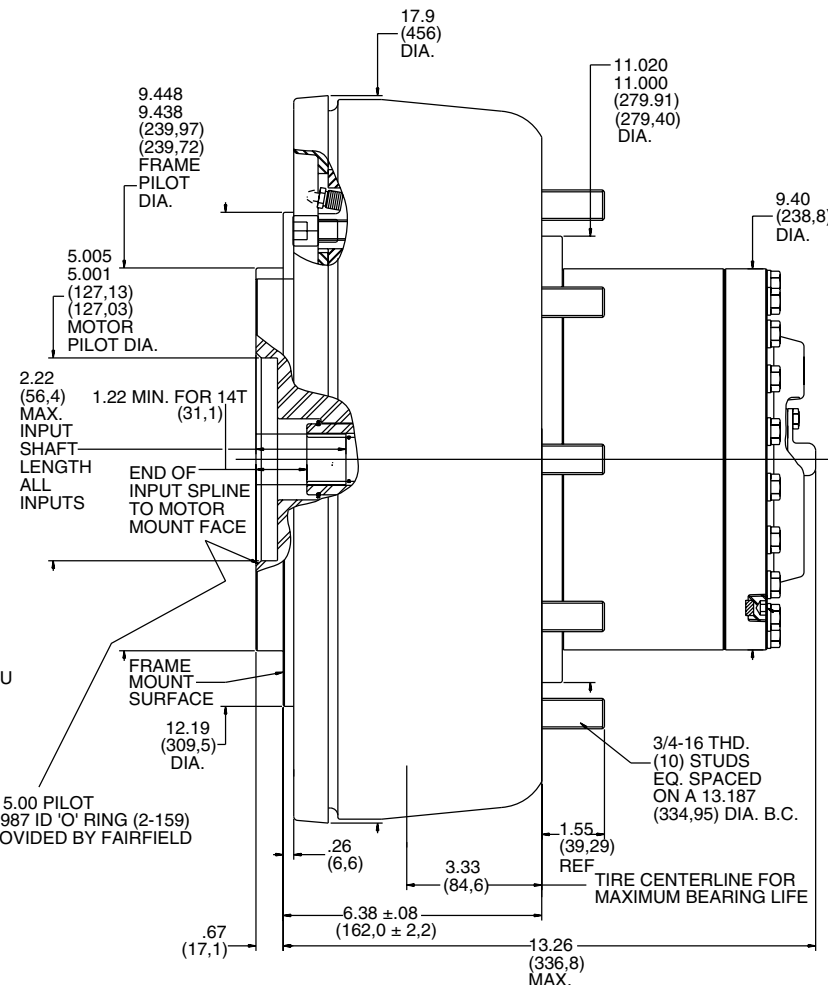


TORQUE-HUB®
Planetary Final Drives



PARKING CABLE ASSEMBLY



SHOWN WITH OPTIONAL OUTPUT BRAKE

W4C1

Performance Data

Continuous	Intermittent	Peak
40,000 lb-in	80,000 lb-in	100,000 lb-in
3,333 lb-ft	6,667 lb-ft	8,333 lb-ft
4,519 Nm	9,039 Nm	11,299 Nm
452 kg-m	904 kg-m	1,300 kg-m

For ultimate torque and horsepower capacities, contact a Torque-Hub® representative.

Speed Limitations

Input Speed: 5,000 RPM Maximum Intermittent
3,750-4,500 RPM Maximum Continuous

Weight

Approximately 361 lbs (164 kg)

Note: Specific models will change weights.

W4C1 Model Formula

Oil

Fill to half full with 90 weight gear lube with EP additive on most applications.

Approximate Volume 44oz. (1,301 cm³)

Note: Oil level and type will vary with specific model and application.

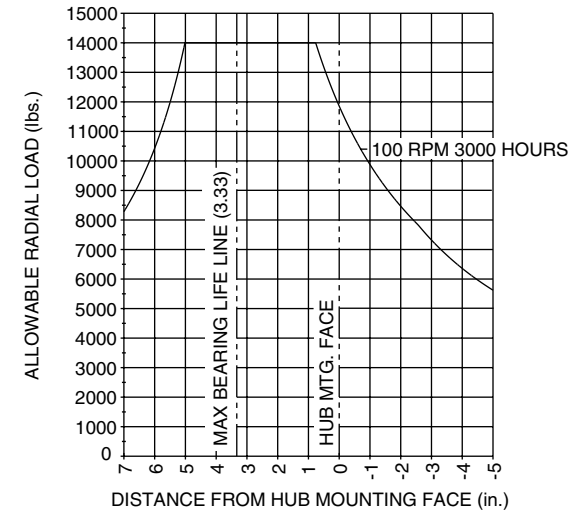
Conditions of Bearing Curve

Life = 3,000 hours B-10
Speed = 100 RPM output

To adjust for loads and speeds other than shown on curve:

$$\text{Adjusted Life (hrs)} = 3,000 \left(\frac{100 \text{ RPM}}{\text{Speed (Adjusted)}} \right) \times \left(\frac{\text{Load (Curve)}}{\text{Load (Adjusted)}} \right)^{10/3}$$

Bearing Curve



W 4 C 1 8 I C 4 26

W – Torque-Hub® Wheel Drive

4 – Series

Spindle				Hub	
Motor Mount	Flange Mounting Dia.	Motor B.C.	Frame B.C.	Mounting Dia.	Flange B.C.
C1	SAE "C"	9.448 9.438	(4) 1/2-13 6.375 B.C.	(8) 5/8-18 10.827 B.C.	(10) 3/4-16 11.020 11.000 13.187 B.C.

NOTE: For units without brake use C2 hub/spindle assembly.

Brake

0 – Not Included
L – Left Hand Brake
R – Right Hand Brake
Z – Seal Boot (not available with brake option)

Stud

0 – Not Included
1 – 3/4-16 by 2.53" (Use with .850/.848 flange holes on cast iron hub without brake)
8 – 3/4-16 by 3.25" (Use with .850/.848 flange holes on cast iron hub with brake)

Input

3 – 13T, 16/32 Spline
4 – 14T, 12/24 Spline

Reduction

12 – 12.36:1
17 – 16.89:1
21 – 21.30:1
26 – 26.28:1
30 – 29.78:1
37 – 36.66:1

Brake Cable

Length(L ₁)	Length(L ₂)	Length(L ₃)
Mtg. shoulder brake to mtg. shoulder of vehicle		Mtg. shoulder of vehicle to activation lever
Overall		
A – 68"	85.5"	8.90"
B – 38"	55.5"	8.90"
C – 143"	158.4"	6.73"
D – 80.13"	96.5"	10.38" (RH)
E – 14.63"	31.0"	7.38" (LH)
0 – Not Included		

FAIRFIELD

GEARED FOR EXCELLENCE

Fairfield Manufacturing Company, Inc.

First in Custom Gears and Drive Systems

U.S. 52 South
P.O. Box 7940
Lafayette, IN 47903-7940 USA
Telephone (765) 772-4000
FAX (765) 772-4001
www.fairfieldmfg.com

Torque-Hub is a registered trademark of Fairfield.
© 2000 Fairfield Manufacturing Company, Inc.