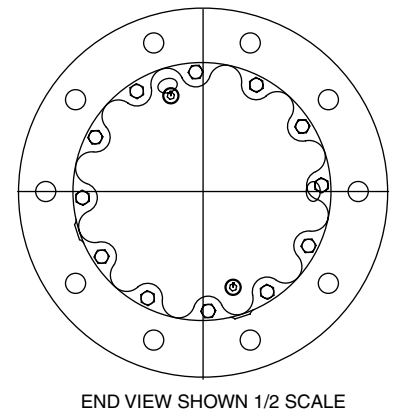
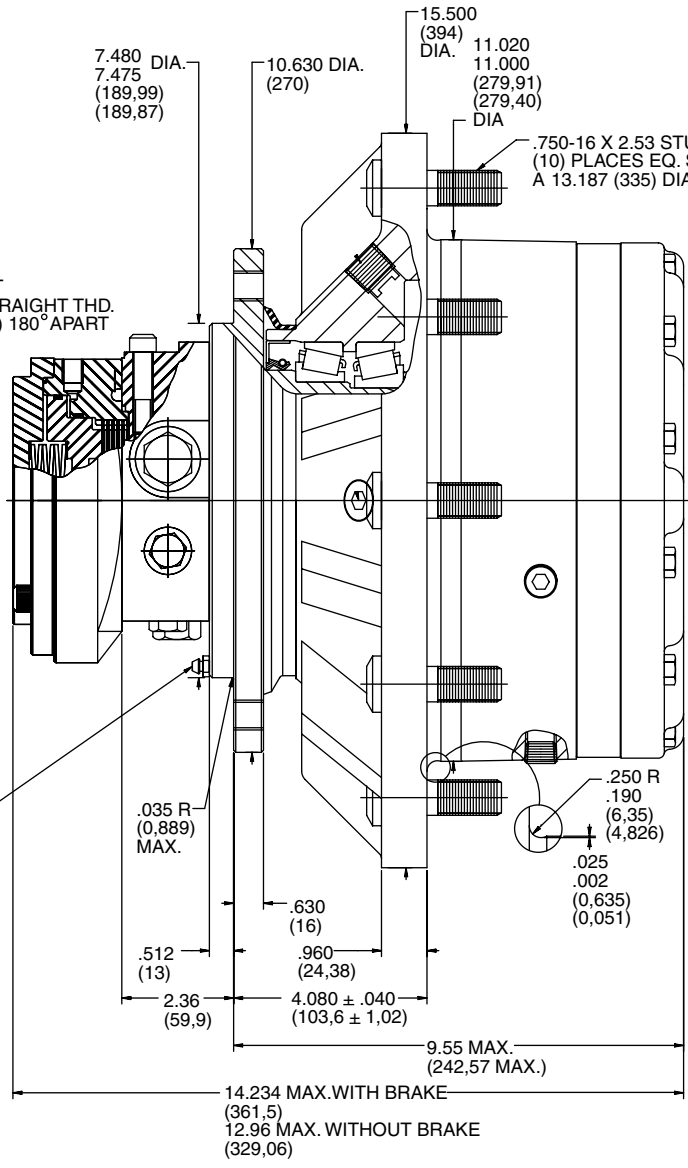
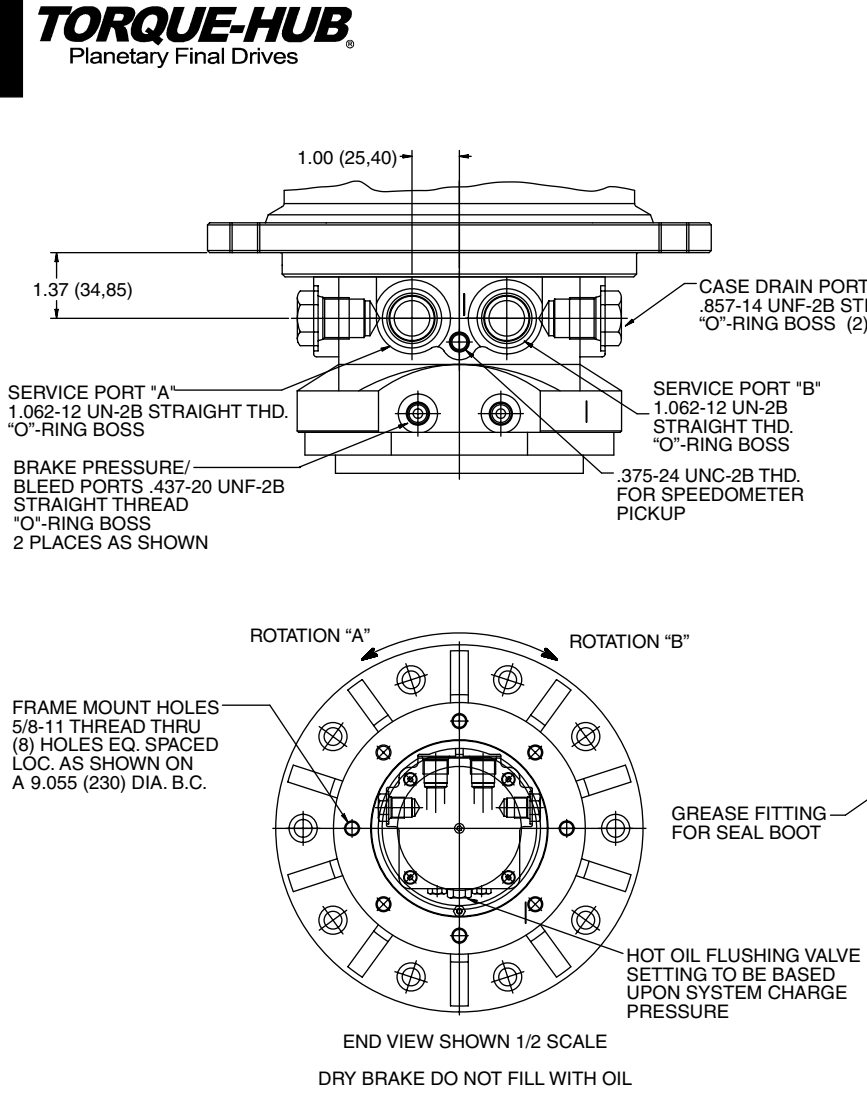


3 Series
W3M1
 Application Sheet

TORQUE-HUB®
 Planetary Final Drives



FAIRFIELD
 GEARED FOR EXCELLENCE

NOTE: MM SHOWN IN ()
 MOTOR CAVITY DIMENSIONS VARY WITH MODEL

OTHER MODELS ALSO AVAILABLE

W3M1

Performance Data

Continuous	Intermittent	Peak
37,500lb-in	75,000lb-in	90,000lb-in
3,125lb-ft	6,250lb-ft	8,333ft-lb
4,234Nm	8,468Nm	11.290Nm
432kg-m	864kg-m	1,152kg-m

For ultimate torque and horsepower capacities, contact a Torque-Hub® representative.

Speed Limitations

Input Speed: 4000 RPM Maximum Intermittent

Weight

Approximately 215 lbs (98kg) without Brake
Add 10 lbs (5kg) for Brake

Note: Specific models will change weights.

W3M1 Model Formula

Oil

Fill to half full with 90 weight gear lube with EP additive on most applications.

Approximate Volume 44 oz. (1,301 cm³)

Note: Oil level and type will vary with specific model and application.

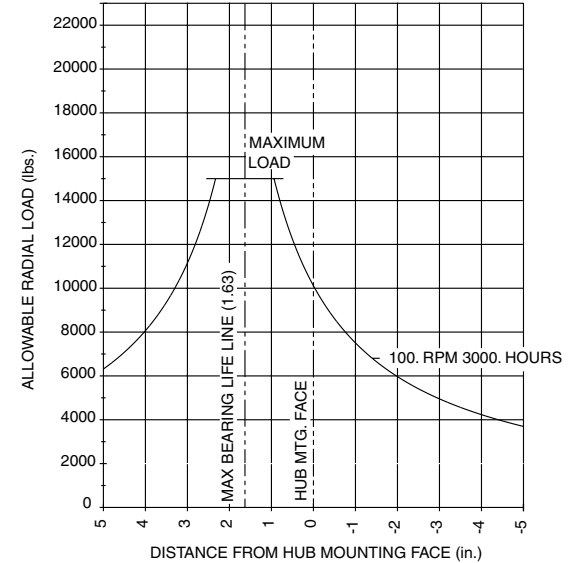
Conditions of Bearing Curve

Life = 3,000 hours B-10
Speed = 100 RPM output

To adjust for loads and speeds other than shown on curve:

$$\text{Adjusted Life (hrs)} = 3,000 \left(\frac{100 \text{ RPM}}{\text{Speed (Adjusted)}} \right) \times \left(\frac{\text{Load (Curve)}}{\text{Load (Adjusted)}} \right)^{10/3}$$

Bearing Curve



Special Features

ZC – Standard Cover with 2 Extra Pipe Plugs 180 Apart

W – Torque-Hub® Wheel Drive w/Intergral Motor

3 – Series

	Housing	
	Mtg. Dia.	Flange Holes
M1	11.020 11.000	.850/.848(10)Holes on a 13.187 Dia. B.C.
M2	11.020 11.000	.713/.709(10)Holes on a 12.598 Dia. B.C.

Stud

- 0**– Not Included
- 1**– 3/4-16 by 2.52 Inch (use with .850/.848 Flange Hole)
- 8**– 3/4-16 by 3.25 Inch (use with .850/.848 Flange Hole)

Brake (Dry)

- 0**– Not Included
- A**– Spring Applied, Pressure Release
Static Torque 1770in-lb Initial Release 135psi
Full Release 190psi Max. Release 3000psi

Motor Flushing Valve Relief Settings

- 1**– Blocked Flushing Valve
- A**– 206 psi (14 Bar)
- B**– 110 psi (7.5 Bar)
- C**– 230 psi (16 Bar)
- D**– 302 psi (21 Bar)
- E**– 174 psi (12 Bar)
- F**– 182 psi (12.5 Bar)
- G**– 166 psi (11.5 Bar)
- H**– 270 psi (18.5 Bar)
- I**– 350 psi (24.0 Bar)
- J**– 334 psi (32.0 Bar)
- K**– 214 psi (15.0 Bar)

Ratio Cu. In.

24 –24.43:1	52.18
30 –30.04:1	64.17
35 –34.49:1	73.67
37 –37.48:1	80.21
43 –42.50:1	90.25
50 –50.54:1	108.16
54 –53.58:1	114.66
73 –72.68:1	155.23

Temperature at Hottest Point	Fluid Contamination Levels
Transmission (Normally at case drain)	ISO Code
Max. F–°220	Recommended Limit
C–°104	Continuous Operation – 18/13
Con. F–°180	Limit for Machine Assembly
C–°82	(at roll off) – 21/15

Fluid Viscosity Limits	
SUS (CST)	
Optimum	– 70 (13)
Min. Con.	– 55 (9.0)
Min. Int.	– 47 (6.4)
Max. Con.	– 500 (110)
Max. Cold Start.	– 7500 (1600)

W 3 M1 F 0 A A A 54

Special Features

- 0**– Not Included
- Z**– Seal Boot

Motor/Spindle

	Flange Mtg. Dia.	Flange B.C.	Motor	Notes
A	7.480 7.475	(8) M16x2 on 9.055 B.C.	2.14 cid 1.062-12 UNF Port	Metric Frame Mount
B	7.480 7.475	(8) .625-11 UNC on 9.055 B.C.	2.14 cid 1.062-12 UNF Port	English Frame Mount

FAIRFIELD

GEARED FOR EXCELLENCE

Fairfield Manufacturing Company, Inc.

First in Custom Gears and Drive Systems

U.S. 52 South
P.O. Box 7940
Lafayette, IN 47903-7940 USA
Telephone (765) 772-4000
FAX (765) 772-4010
www.fairfieldmfg.com

Torque-Hub is a registered trademark of Fairfield.
© 2000 Fairfield Manufacturing Company, Inc.