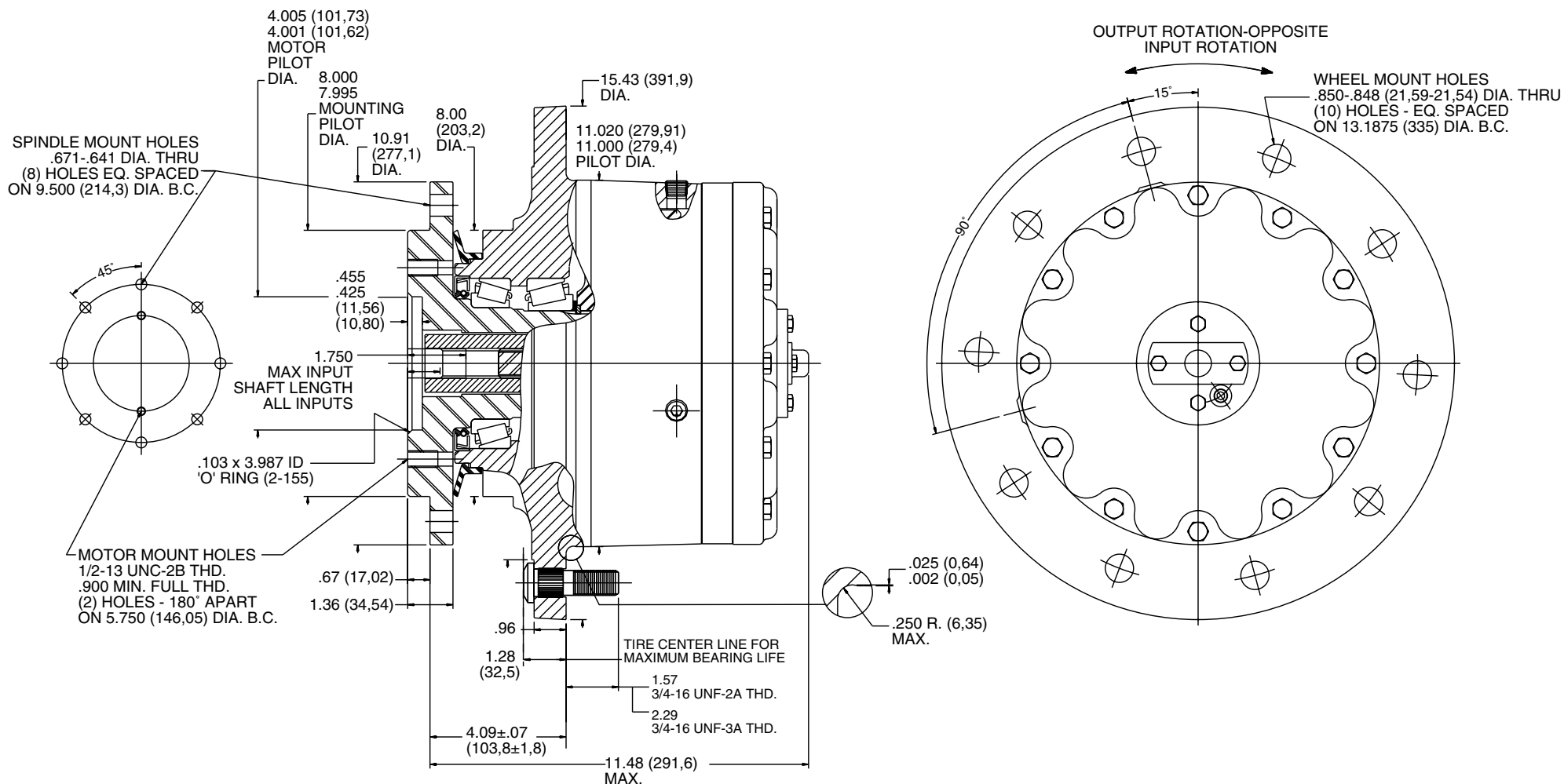


TORQUE-HUB®
Planetary Final Drives



FAIRFIELD
GEARED FOR EXCELLENCE

NOTE: MM SHOWN IN ()
MOTOR CAVITY DIMENSIONS VARY WITH MODEL

OTHER MODELS ALSO AVAILABLE
FAIRFIELD BRAKE AVAILABLE

W3B1

Performance Data

Continuous	Intermittent	Peak
37,500 lb-in	75,000 lb-in	100,000 lb-in
3,125 lb-ft	6,250 lb-ft	8,333 lb-ft
4,234 Nm	8,468 Nm	11,290 Nm
432 kg-m	864 kg-m	1,152 kg-m

For ultimate torque and horsepower capacities, contact a Torque-Hub® representative.

Speed Limitations

Input Speed: 4,000 RPM Maximum
Horsepower: Contact Fairfield

Weight

Approximately 205 lbs (94Kg)

Note: Specific models will change weights.
 Gear kit available for this assembly.
 Consult Fairfield for details.

W3B1 Model Formula

W – Torque-Hub® Wheel Drive

3 – Series

Oil

Fill to half full with 90 weight gear lube with EP additive on most applications.

Approximate Volume 44 oz. (1,301 cm³)

Note: Oil level and type will vary depending on specific model and application.

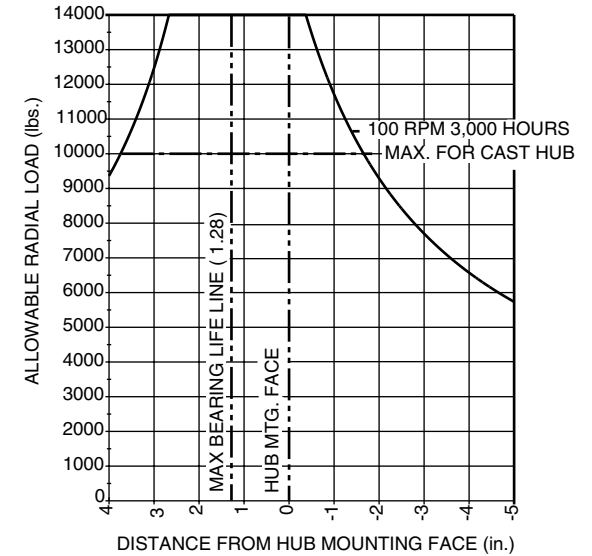
Conditions of Bearing Curve

Life = 3,000 hours B-10
Speed = 100 RPM output

To adjust for loads and speeds other than shown on curve:

$$\text{Adjusted Life (hrs)} = 3,000 \left(\frac{100 \text{ RPM}}{\text{Speed (Adjusted)}} \right) \times \left(\frac{\text{Load (Curve)}}{\text{Load (Adjusted)}} \right)^{10/3}$$

Bearing Curve



W 3 B1 1 0 3 43 ZB

Special Features
ZB – Standard Disconnect
XB – Coupling Subassembly with Antidisengage Spacer

Special Options

0 – Blank
Z – Seal Boot

Reduction
18 – 18.75:1
24 – 24.43:1
30 – 30.04:1
35 – 34.49:1
43 – 42.50:1
54 – 53.58:1
73 – 72.68:1

Input
3 – 13T, 16/32 Spline
8 – 15T, 16/32 Spline

Studs in Wheel Flange

0 – Not Included
1 – 3/4-16 thread by 2-17/32 in. (use with cast iron hub)
5 – 3/4-16 thread by 2-5/8 in. (use with steel hub; not available with BL and BN hubs)
8 – 3/4-16 thread by 3-1/4 in. (use with cast iron hub)

	Spindle				Hub	
	Motor Mount	Flange Mounting Dia.	Motor B.C.	Frame B.C.	Mounting Dia.	Flange B.C.
B1	SAE "B"	8.000 7.995	(2) 1/2-13 5.750 B.C.	(8) 21/32 9.500 B.C.	11.020 11.000	(10) .850/.848 13.1875 B.C.
B2	SAE "B"	8.000 7.995	(2) 1/2-13 5.750 B.C.	(8) 5/8-11 9.500 B.C.	11.020 11.000	(10) .850/.848 13.1875 B.C.
BR	SAE "B"	8.000 7.995	(2) 1/2-13 5.750 B.C.	(10) .875/.873 9.500 B.C.	11.020 11.000	(10) .875/.873 13.1875 B.C.

S.A.E. "C" model also available. Please contact Fairfield.

FAIRFIELD
 GEARED FOR EXCELLENCE
 Fairfield Manufacturing Company, Inc.
 First in Custom Gears and Drive Systems

U.S. 52 South
 P.O. Box 7940
 Lafayette, IN 47903-7940 USA
 Telephone (765) 772-4000
 FAX (765) 772-4001
 www.fairfieldmfg.com

Torque-Hub is a registered trademark of Fairfield.
 © 2000 Fairfield Manufacturing Company, Inc.