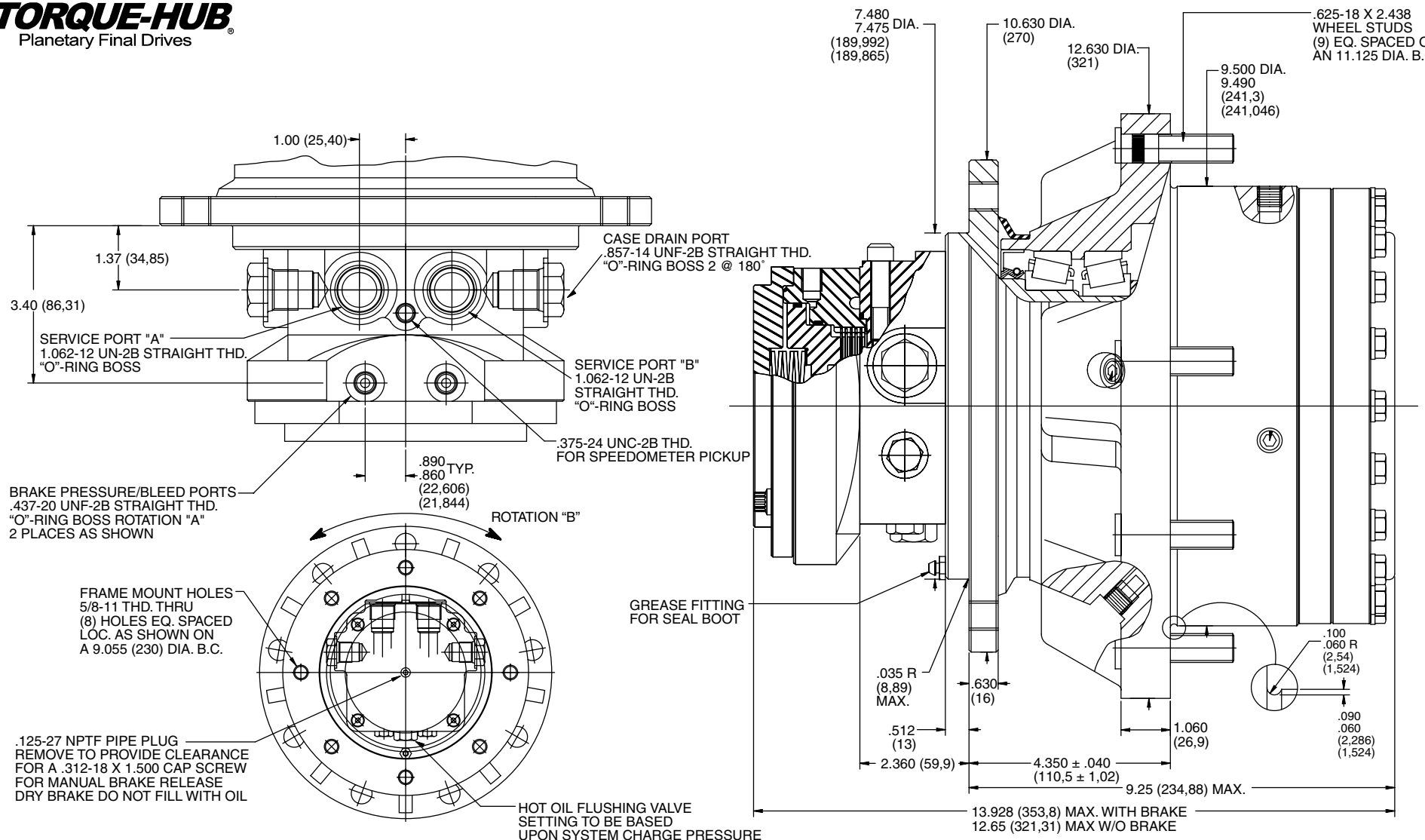


TORQUE-HUB®
Planetary Final Drives



FAIRFIELD
GEARED FOR EXCELLENCE

NOTE: MM SHOWN IN ()
MOTOR CAVITY DIMENSIONS VARY WITH MODEL

OTHER MODELS ALSO AVAILABLE

W2M1

Performance Data

Continuous	Intermittent	Peak
25,000lb-in	50,000lb-in	60,000lb-in
2,087lb-ft	4,167lb-ft	5,000ft-lb
2,817Nm	5,633Nm	6,790Nm
287kg-m	573kg-m	688kg-m

For ultimate torque and horsepower capacities, contact a Torque-Hub® representative.

Speed Limitations

(Contact Fairfield for specific speed information.)

Weight

Approximately 170 lbs (77kg) without Brake
Add 10 lbs (5kg) for Brake

Note: Specific models will change weights.

W2M1 Model Formula

Oil

Fill to half full with 90 weight gear lube with EP additive on most applications.

Approximate Volume 40 oz. (1,184cm³)

Note: Oil level and type will vary with specific model and application.

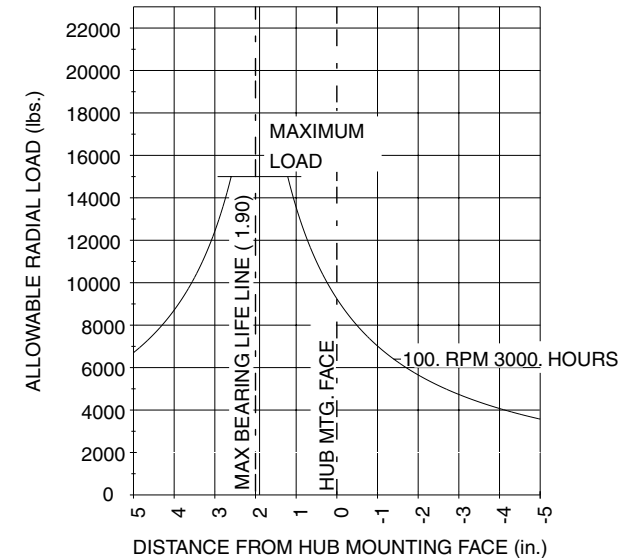
Conditions of Bearing Curve

Life = 3,000 hours B-10
Speed = 100 RPM output

To adjust for loads and speeds other than shown on curve:

$$\text{Adjusted Life (hrs)} = 3,000 \left(\frac{100 \text{ RPM}}{\text{Speed (Adjusted)}} \right) \times \left(\frac{\text{Load (Curve)}}{\text{Load (Adjusted)}} \right)^{10/3}$$

Bearing Curve



W 2 M1 F 0 A A A 49

W – Torque-Hub® Wheel Drive w/Intergral Motor

2 – Series 25,000 lb.-in. Max. Cont.

Housing			
Mtg Dia.	Flange Holes	Mat'l	
M1 9.500 9.490	.642-.639 (9) Holes on a 11.125 Dia. B.C.	G-3000	

Stud

- 0**– Not included
- F**– 5/8 by 2.437 Inch (use with .642/.639 Flange Hole for Cast Iron Hub)
- N**– 1/2-20 by 2.437 Inch (use with .642/.639 Flange Hole for Cast Iron Hub)
- P**– 9/16-18 by 2.437 Inch (use with .642/.639 Flange Hole for Cast Iron Hub)
- Y**– 5/8-18 by 2.840 Inch (use with .642/.639 Flange Hole for Cast Iron Hub)

Brake (Dry)

- 0**– Not Included
- A**– Spring Applied, Pressure Release
Static Torque 1770in-lb Initial Release 135psi
Full Release 190psi Max. Release 3000psi

Motor Flushing Valve Relief Settings

- 1**– Blocked Flushing Valve
- A**– 206 psi (14 Bar)
- B**– 110 psi (7.5 Bar)
- C**– 230 psi (16 Bar)
- D**– 302 psi (21 Bar)
- E**– 174 psi (12 Bar)
- F**– 182 psi (12.5 Bar)
- G**– 166 psi (11.5 Bar)
- H**– 270 psi (18.5 Bar)
- I**– 350 psi (24.0 Bar)
- J**– 334 psi (32.0 Bar)
- K**– 214 psi (15.0 Bar)

Ratio	Cu. In.
13–13.30:1	29
20–19.86:1	43
25–24.82:1	53
28–28.22:1	60
34–33.83:1	72
37–36.64:1	78
43–42.65:1	91
49–49.03:1	105

FAIRFIELD

GEARED FOR EXCELLENCE

Fairfield Manufacturing Company, Inc.

First in Custom Gears and Drive Systems

U.S. 52 South
P.O. Box 7940
Lafayette, IN 47903-7940 USA
Telephone (765) 772-4000
FAX (765) 772-4010
www.fairfieldmfg.com

Special Features

- 0**– Not Include
- Z**– Seal Boot

Motor/Spindle

	Flange Mounting Dia.	Flange B.C.	Motor	Notes
A	7.480 7.475	(8) M16X2 on 9.055 B.C.	2.14cid 1.062- 12 UNF Port	Metric Frame Mount
B	7.480 7.475	(8).625-11 UNC on 9.055 B.C.	2.14cid 1.062- 12 UNF Port	English Frame Mount

Temperature at Hottest Point	Fluid Contamination Levels
Transmission (Normally at case drain)	ISO Code
Max. F – °220	Recommended Limit
C – °104	Continuous Operation – 18/13
Con. F – °180	Limit for Machine Assembly
C – °82	(at roll off) – 21/15
Fluid Viscosity Limits	
SUS (CST)	
Optimum – 70 (13)	
Min. Con. – 55 (9.0)	
Min. Int. – 47 (6.4)	
Max. Con. – 500 (110)	
Max. Cold Start. – 7500 (1600)	

Torque-Hub is a registered trademark of Fairfield.
© 2000 Fairfield Manufacturing Company, Inc.