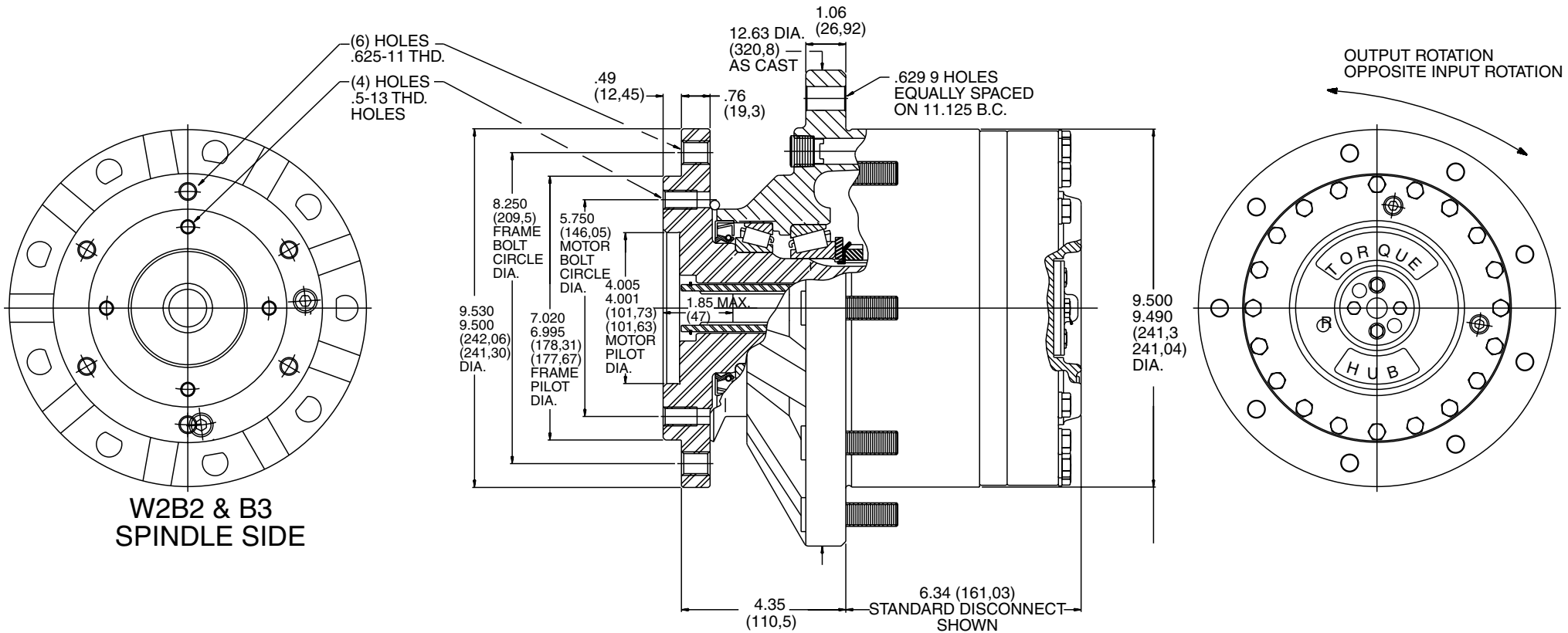


**TORQUE-HUB**  
Planetary Final Drives



**FAIRFIELD**  
GEARED FOR EXCELLENCE

NOTE: MM SHOWN IN ( )  
MOTOR CAVITY DIMENSIONS VARY WITH MODEL

OTHER MODELS ALSO AVAILABLE  
FAIRFIELD BRAKE AVAILABLE

## W2B2

### Performance Data

Continuous	Intermittent	Peak
25,000lb-in	50,000lb-in	60,000lb-in
2,087 lb-ft	4,167 lb-ft	5,000 lb-ft
2,817 Nm	5,633 Nm	6,790 Nm
287 kg-m	573 kg-m	688 kg-m

For ultimate horsepower capacities, contact a Torque-Hub® representative.

### Speed Limitations

**Input Speed:** 4,000 RPM Maximum Intermittent  
**Horsepower:** Contact Fairfield

### Weight

**Approximately** 149 lbs (68 kg)

Note: Specific models will change weights.

### W2B2 Model Formula

### Oil

Fill to half full with EP-90 oil on most applications.

**Approximate Volume** 40 oz. (1,184 cm³)

Note: Oil level and type will vary with specific model and application.

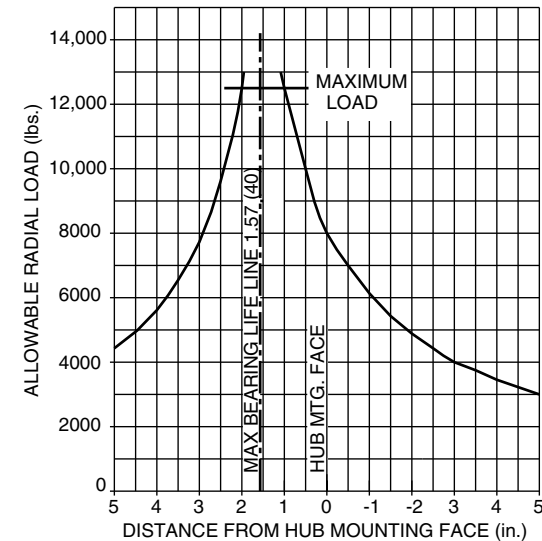
### Conditions of Bearing Curve

**Life** = 3,000 hours B-10  
**Speed** = 100 RPM output

To adjust for loads and speeds other than shown on curve:

$$\text{Adjusted Life (hrs)} = 3,000 \left( \frac{100 \text{ RPM}}{\text{Speed (Adjusted)}} \right) \times \left( \frac{\text{Load (Curve)}}{\text{Load (Adjusted)}} \right)^{10/3}$$

### Bearing Curve



**W 2 B2 F 0 3 28 X**

**W** – Torque-Hub® Wheel Drive

**2** – Series

**Stud**

**0** – Not included  
**F** – 5/8-18 by 2.438 in.

**Input**

**3** – 13T, 16/32 Spline  
**8** – 15T, 16/32 Spline

**Special Features**

**N** – Special antisengage for Nichols 110 motor only (spacer placed in coupling)  
**X** – Antisengage (spacer placed in coupling)

**Reduction**

**13** – 13.30:1  
**20** – 19.86:1  
**25** – 24.82:1  
**28** – 28.22:1  
**34** – 33.83:1  
**37** – 36.64:1  
**43** – 42.65:1  
**49** – 49.03:1  
**55** – 54.86:1  
**68** – 68.00:1

**Brake**

**0** – Not Included  
**Z** – Seal Boot

**FAIRFIELD**  
 GEARED FOR EXCELLENCE  
 Fairfield Manufacturing Company, Inc.  
 First in Custom Gears and Drive Systems

U.S. 52 South  
 P.O. Box 7940  
 Lafayette, IN 47903-7940 USA  
 Telephone (765) 772-4000  
 FAX (765) 772-4001  
 www.fairfieldmfg.com

	Spindle			Hub		
	Motor Mount	Flange Mounting Dia.	Motor B.C.	Frame B.C.	Mounting Dia.	Flange B.C.
<b>B2</b>	SAE "B"	7.000 6.995	(4) 1/2-13 5.750 B.C.	(6) 5/8-11 8.250 B.C.	9.500 9.490	(9) .629 thru 11.125 B.C.
<b>B3</b>	SAE "B"	7.000 6.995	(4) 1/2-13 5.750 B.C.	(6) .656 thru 8.250 B.C.	9.500 9.490	(9) .629 thru 11.125 B.C.

Torque-Hub is a registered trademark of Fairfield.  
 © 2000 Fairfield Manufacturing Company, Inc.