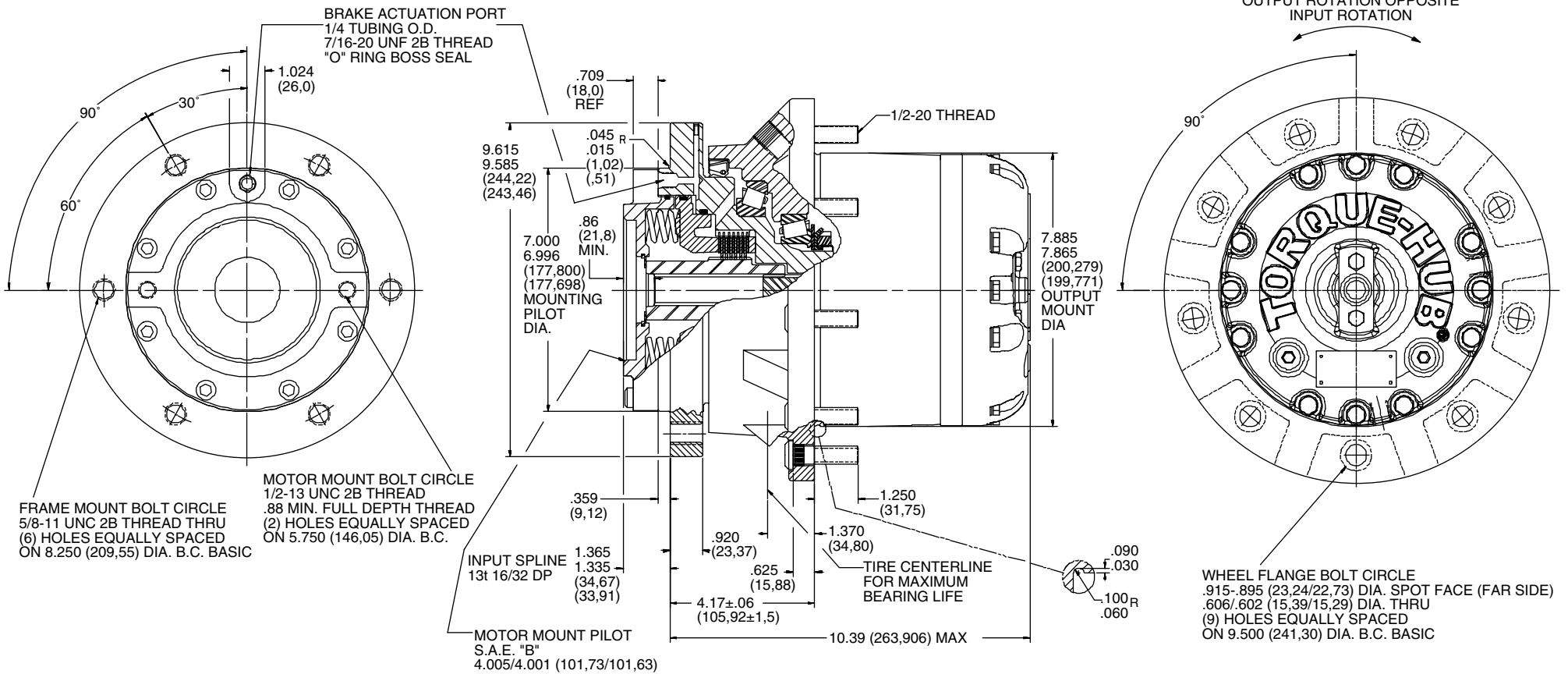


**TORQUE-HUB®**  
Planetary Final Drives



**FAIRFIELD**  
GEARED FOR EXCELLENCE

NOTE: MM SHOWN IN ( )  
MOTOR CAVITY DIMENSIONS VARY WITH MODEL

OTHER MODELS ALSO AVAILABLE

## W1BJ

### Performance Data

Continuous	Intermittent	Peak
15,000 lb-in	30,000 lb-in	40,000 lb-in
1,250 lb-ft	2,500 lb-ft	3,333 lb-ft
1,690 Nm	3,381 Nm	4,508 Nm
172 kg-m	345 kg-m	460 kg-m

For ultimate torque and horsepower capacities, contact a Torque-Hub® representative.

### Speed Limitations

**Input Speed:** 4,000 RPM Maximum Intermittent  
**Horsepower:** Contact Fairfield

### Weight

**Approximately 118 lbs (53 kg)**

Note: Specific models will change weights.

### W1BJ Model Formula

### Oil

Fill to half full with EP-90 oil on most applications.

**Approximate Volume** 31 oz. (917 cm<sup>3</sup>)

Note: Oil level and type will vary with specific model and application.

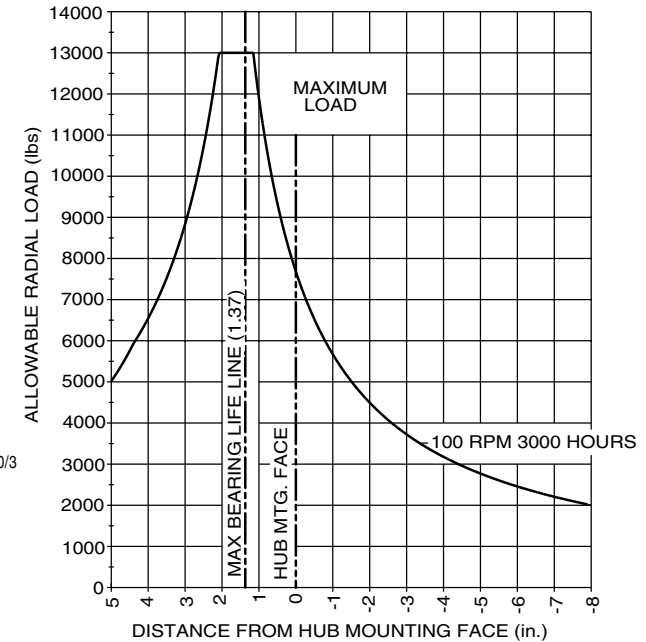
### Conditions of Bearing Curve

**Life** = 3,000 hours B-10  
**Speed** = 100 RPM output

To adjust for loads and speeds other than shown on curve:

$$\text{Adjusted Life (hrs)} = 3,000 \left( \frac{100 \text{ RPM}}{\text{Speed (Adjusted)}} \right)^3 \times \left( \frac{\text{Load (Curve)}}{\text{Load (Adjusted)}} \right)^{10/3}$$

### Bearing Curve



**W 1 B J 4 F 3 24 X**

**W – Torque-Hub® Wheel Drive**

**1 – Series**

Spindle				Hub		
Motor Mount	Flange Mounting Dia.	Motor B.C.	Frame B.C.	Mounting Dia.	Flange B.C.	
<i>BJ</i>	SAE "B"	7.000 6.996	(2) 1/2-13 5.750 B.C.	(6) 5/8-11 8.250 B.C.	7.885 7.865	(9) .606/.602 9.500 B.C.

**Stud**

**0** – Not Included  
**4** – 1/2-20 by 1.875 in.

**Input**

**3** – 13T, 16/32 Spline

**Special Features**

**X** – Antidissengage (spacer placed in coupling)

**Reduction**

**18** – 18.25:1  
**24** – 24.85:1  
**30** – 30.05:1  
**35** – 35.13:1  
**40** – 40.25:1  
**49** – 49.29:1  
**60** – 59.50:1  
**68** – 68.00:1

**Brake (for static parking only)\***

Description	Rated Torque**	Release Pressure**†
<i>E</i> – Input brake for 13T, 16/32 input	2,400 lb-in (static)	Initial = 142 PSI Full = 205 PSI
<i>F</i> – Input brake for 13T, 16/32 input	1,475 lb-in (static)	Initial = 90 PSI Full = 120 PSI

\* Optional port may be required for some variable motors.

\*\* Specific performance may vary per application.

† Maximum allowable pressure = 3,000 PSI.

# FAIRFIELD

GEARED FOR EXCELLENCE

Fairfield Manufacturing Company, Inc.

First in Custom Gears and Drive Systems

U.S. 52 South  
 P.O. Box 7940  
 Lafayette, IN 47903-7940 USA  
 Telephone (765) 772-4000  
 FAX (765) 772-4001  
 www.fairfieldmfg.com

Torque-Hub is a registered trademark of Fairfield.  
 © 2000 Fairfield Manufacturing Company, Inc.