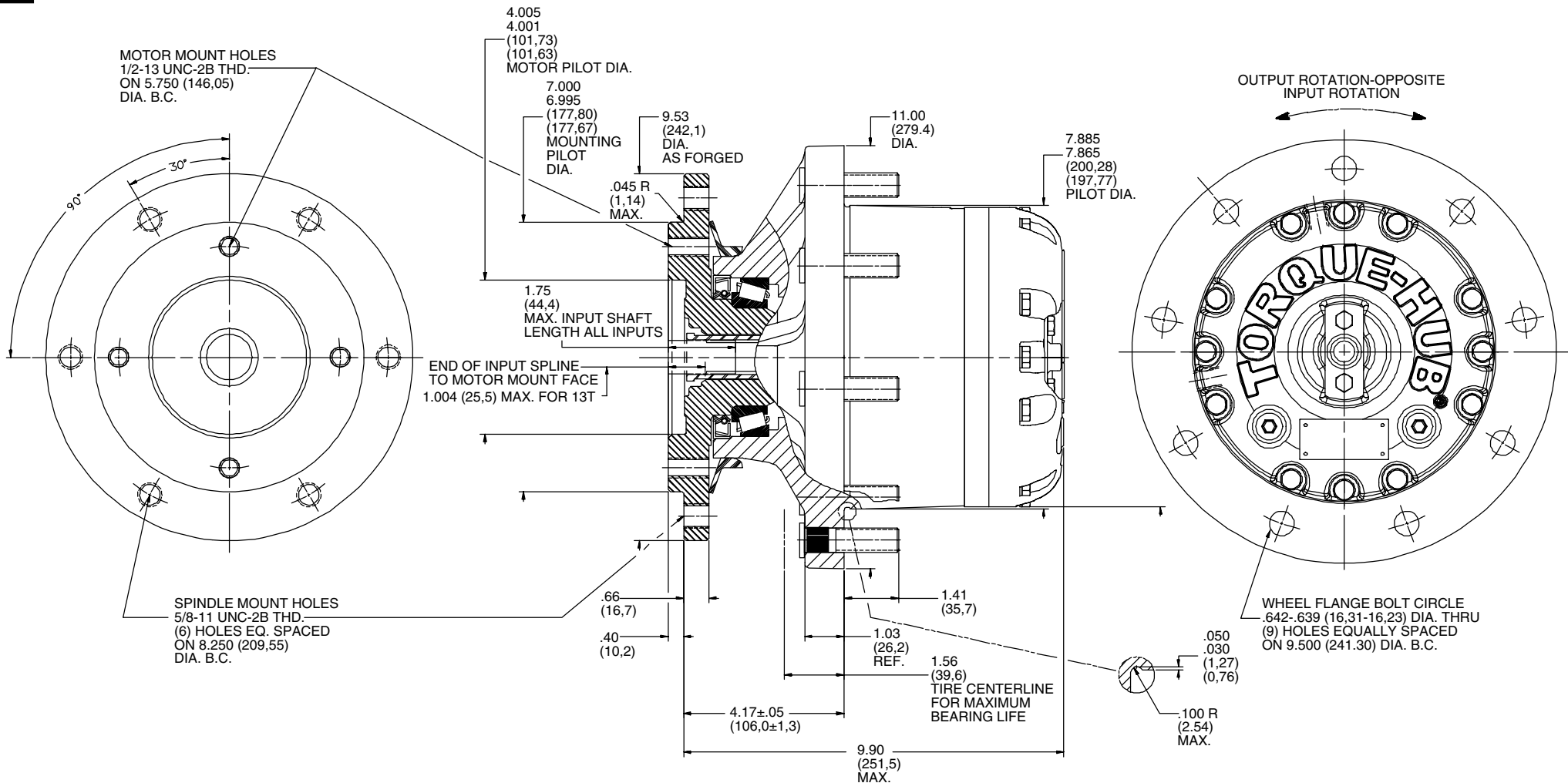


1 Series

W1BF

Application Sheet

TORQUE-HUB®
Planetary Final Drives



FAIRFIELD
GEARED FOR EXCELLENCE

NOTE: MM SHOWN IN ()
MOTOR CAVITY DIMENSIONS VARY WITH MODEL

OTHER MODELS ALSO AVAILABLE
FAIRFIELD BRAKE AVAILABLE

W1BF

Performance Data

Continuous	Intermittent	Peak
15,000 lb-in	30,000 lb-in	40,000 lb-in
1,250 lb-ft	2,500 lb-ft	3,333 lb-ft
1,690 Nm	3,381 Nm	4,508 Nm
172 kg-m	345 kg-m	460 kg-m

For ultimate torque and horsepower capacities, contact a Torque-Hub® representative.

Speed Limitations

Input Speed: 4,000 RPM Maximum Intermittent
Horsepower: Contact Fairfield

Weight

Approximately 90 lbs (41 kg)

Note: Specific models will change weights.

W1BF Model Formula

W – Torque-Hub® Wheel Drive

1 – Series

Oil

Fill to half full with EP-90 oil on most applications.

Approximate Volume 17 oz. (503 cm³)

Note: Oil level and type will vary with specific model and application.

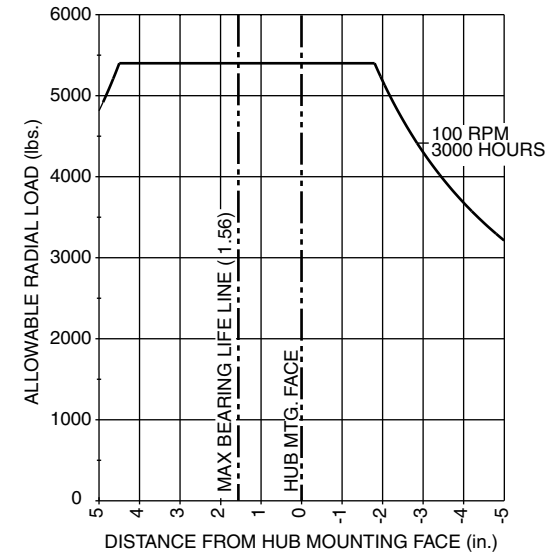
Conditions of Bearing Curve

Life = 3,000 hours B-10
Speed = 100 RPM output

To adjust for loads and speeds other than shown on curve:

$$\text{Adjusted Life (hrs)} = 3,000 \left(\frac{100 \text{ RPM}}{\text{Speed (Adjusted)}} \right) \times \left(\frac{\text{Load (Curve)}}{\text{Load (Adjusted)}} \right)^{10/3}$$

Bearing Curve



W 1 B F F 0 3 24 X

Special Features

X – Antidisengage (spacer placed in coupling)

Stud

0 – Not Included
F – 5/8-18 by 2.437 in.
N – 1/2-20 by 2.437 in.

Input

3 – 13T, 16/32 Spline

Seal Boot

0 – Blank
Z – Included

Reduction

18 – 18.25:1
24 – 24.85:1
30 – 30.05:1
35 – 35.13:1
40 – 40.25:1
49 – 49.29:1
60 – 59.50:1
68 – 68.00:1

FAIRFIELD
 GEARED FOR EXCELLENCE

Fairfield Manufacturing Company, Inc.
 First in Custom Gears and Drive Systems

U.S. 52 South
 P.O. Box 7940
 Lafayette, IN 47903-7940 USA
 Telephone (765) 772-4000
 FAX (765) 772-4001
 www.fairfieldmfg.com

	Spindle				Hub	
	Motor Mount	Flange Mounting Dia.	Motor B.C.	Frame B.C.	Mounting Dia.	Flange B.C.
BF	SAE "B"	7.000 6.995	(4) 1/2-13 5.750 B.C.	(6) 5/8-11 8.250 B.C.	7.885 7.865	(9) .642/.639 thru 9.500 B.C.
BD	SAE "B"	7.000 6.995	(4) 1/2-13 5.750 B.C.	(6) .671/.653 8.250 B.C.	7.885 7.865	(9) .642/.639 thru 9.500 B.C.

Torque-Hub is a registered trademark of Fairfield.
 © 2000 Fairfield Manufacturing Company, Inc.