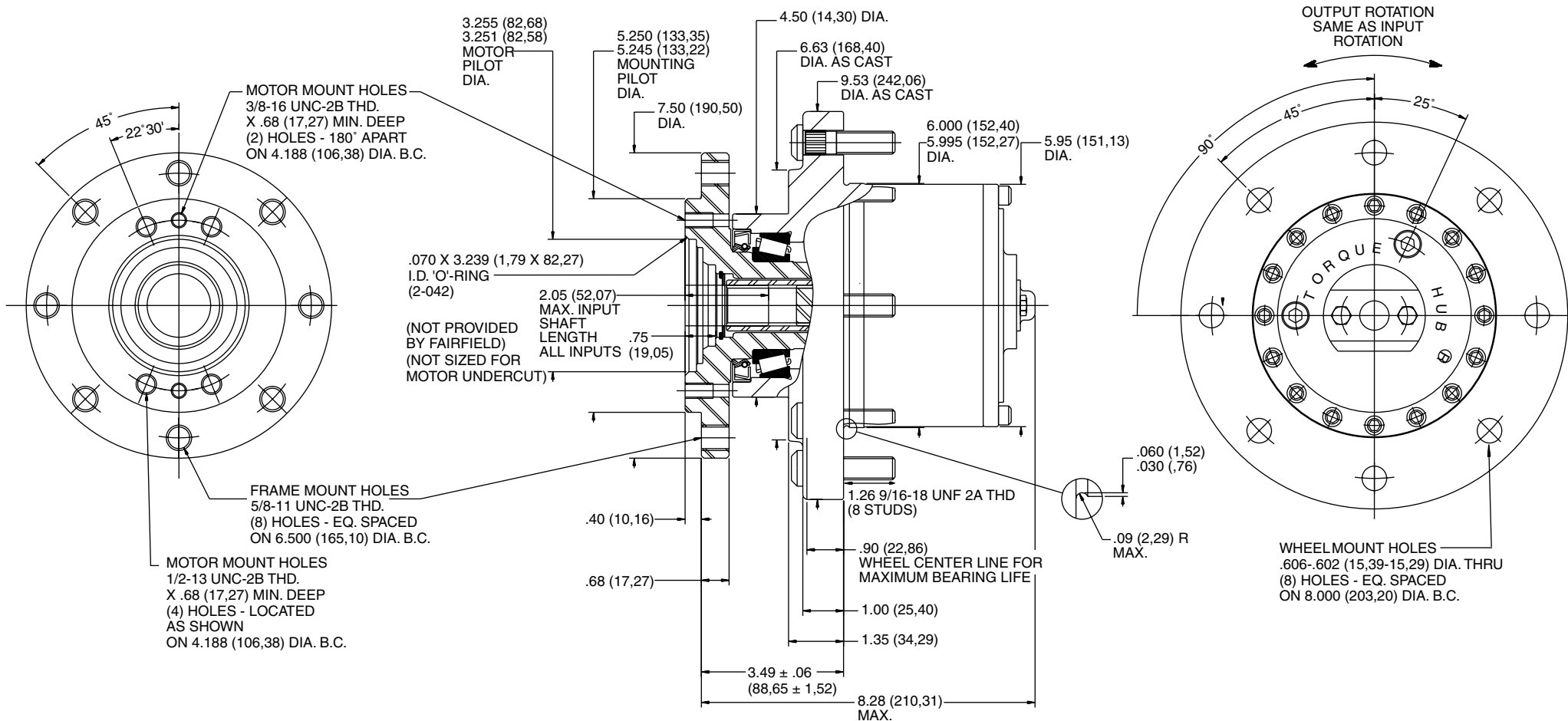


TORQUE-HUB
Planetary Final Drives



W07A

Performance Data

Continuous	Intermittent	Peak
7,500 lb-in	15,000 lb-in	20,000 lb-in
625 lb-ft	1,250 lb-ft	1,666.7 lb-ft
845 Nm	1,690 Nm	2,260 Nm
86 kg-m	172 kg-m	230 kg-m

For ultimate torque and horsepower capacities, contact a Torque-Hub® representative.

Speed Limitations

Input Speed: 1500 RPM Maximum Intermittent
Horsepower: 10 HP Continuous
 20 HP Maximum

Weight

Approximately 55 lbs (25 kg)

Note: Specific models will change weights.

W07A Model Formula

W – Torque-Hub® Wheel Drive

07 – Series

Spindle				Hub		
Motor Mount	Flange Mounting Dia.	Motor B.C.	Frame B.C.	Mounting Dia.	Flange B.C.	
A3	SAE "A" 5.250 5.240	(4) 1/2-13 4.188 B.C.	(8) 5/8-11 6.500 B.C.	6.000 5.995	(8) .606/.602 8.00 B.C.	

S.A.E. "B" Pilot also available. Please contact Fairfield.

FAIRFIELD

GEARED FOR EXCELLENCE

Fairfield Manufacturing Company, Inc.

First in Custom Gears and Drive Systems

U.S. 52 South
 P.O. Box 7940
 Lafayette, IN 47903-7940 USA
 Telephone (765) 772-4000
 FAX (765) 772-4001
 www.fairfieldmfg.com

Oil

Fill to half full with 90 weight gear lube with EP additive on most applications.

Approximate Volume 10 oz. (296 cm³)

Note: Oil level and type will vary with specific model and application.

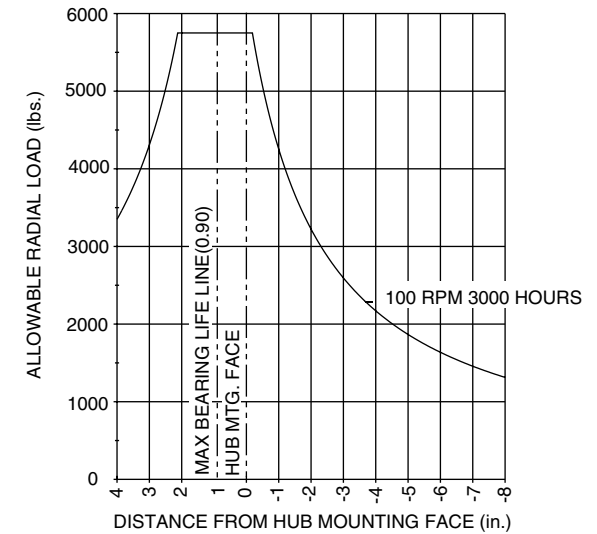
Conditions of Bearing Curve

Life = 3,000 hours B-10
Speed = 100 RPM output

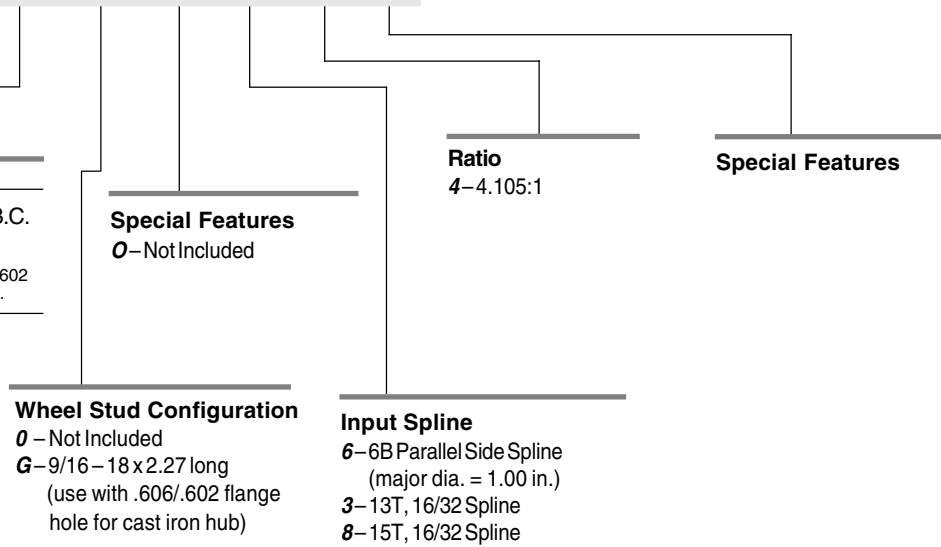
To adjust for loads and speeds other than shown on curve:

$$\text{Adjusted Life (hrs)} = 3,000 \left(\frac{100 \text{ RPM}}{\text{Speed (Adjusted)}} \right) \times \left(\frac{\text{Load (Curve)}}{\text{Load (Adjusted)}} \right)^{10/3}$$

Bearing Curve



W 07 A3 G O 6 4



Wheel Stud Configuration
 0 – Not Included
 G – 9/16 – 18 x 2.27 long
 (use with .606/.602 flange hole for cast iron hub)

Input Spline
 6 – 6B Parallel Side Spline
 (major dia. = 1.00 in.)
 3 – 13T, 16/32 Spline
 8 – 15T, 16/32 Spline